



The Beyondness of Bees – a Creative Black

Country Funded project

Series of art-science workshops lead by artists

Susan Brisco (fine artist) and Elise Stewart (textiles artist)



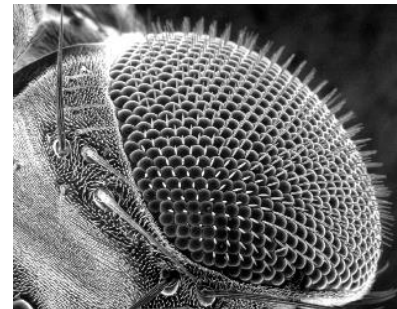
at **Wildside Activity Centre**. www.wildsideac.co.uk Hordern Rd, Wolverhampton WV6 0HA.

Microscope drawing and stitch studies of Bees.



Science meets art to look beyond the surface to see the powerful aesthetics of the microscopic world of bees. Observe the compound eye, or the hairs that carry pollen grains or the translucent, architectural detail of the wings. Explore these

unseen elements through the microscope eye-piece and make new images with an intriguing abstract aesthetic through drawing and stitch. The art pieces will be combined for an exhibition which will involve a wider audience in the unexpected use of multi-media art and the wonder of bees.



To book a place call Wildside 01902 572240

Suitable for adults and children (age 8 and over). £4 per participant

<i>Microscope drawing workshop</i>	<i>*Stitch workshop</i>
Thursday 1 st November 2018 10:30 – 12:30	Sunday 17 th February 2018 10:00 – 12:30
Sunday 20 th January 2019 10:00-12:00	Sunday 27 th January 2019 10:00 – 12:30

*Participants will be encouraged to attend one microscope drawing workshop and follow on to a stitch workshop but not essential.